



410 Avenue of the Americas



## NEW YORK INTERNATIONAL PLAZA

New York International Plaza (NYIP) is a modern Class "A" suburban master-planned business center situated on 260 acres in the Town of New Windsor, New York.

- Located across the street from the Stewart International Airport Terminal
- At the crossroads of Interstate 87 (NYS Thruway) and Interstate 84
- NYIP provides over 2 million square feet of commercial development in a park-like setting convenient to area amenities, including hotels, residential housing, corporate offices, retail & restaurants

### Building Features:

- Build-to-suit opportunity
- 16' clear height ceilings
- At-grade and truck height loading docks
- 3-phase high-voltage electric service
- Gas heating
- Sprinklered space
- Multiple fiber-optic telecommunication providers
- Ample on-site parking
- Expansion space
- Eligible for financial assistance & incentives from the NYS Empire Zone Program and the Orange County Industrial Development Agency
- Municipal water and sewer service



FIRST COLUMBIA

22 Century Hill Dr., Ste 301

Latham, NY 12110

518.213.1000

[www.NYIntPlaza.com](http://www.NYIntPlaza.com)



412 Avenue of the Americas



## NEW YORK INTERNATIONAL PLAZA

New York International Plaza (NYIP) is a modern Class "A" suburban master-planned business center situated on 260 acres in the Town of New Windsor, New York.

- Located across the street from the Stewart International Airport Terminal
- At the crossroads of Interstate 87 (NYS Thruway) and Interstate 84
- NYIP provides over 2 million square feet of commercial development in a park-like setting convenient to area amenities, including hotels, residential housing, corporate offices, retail & restaurants

### Building Features:

- Build-to-suit opportunity
- 16' clear height ceilings
- At-grade and truck height loading docks
- 3-phase high-voltage electric service
- Gas heating
- Sprinklered space
- Multiple fiber-optic telecommunication providers
- Ample on-site parking
- Expansion space
- Eligible for financial assistance & incentives from the NYS Empire Zone Program and the Orange County Industrial Development Agency
- Municipal water and sewer service



FIRST COLUMBIA

22 Century Hill Dr., Ste 301

Latham, NY 12110

518.213.1000

[www.NYIntPlaza.com](http://www.NYIntPlaza.com)



# SITE PLAN



## NEW YORK INTERNATIONAL PLAZA

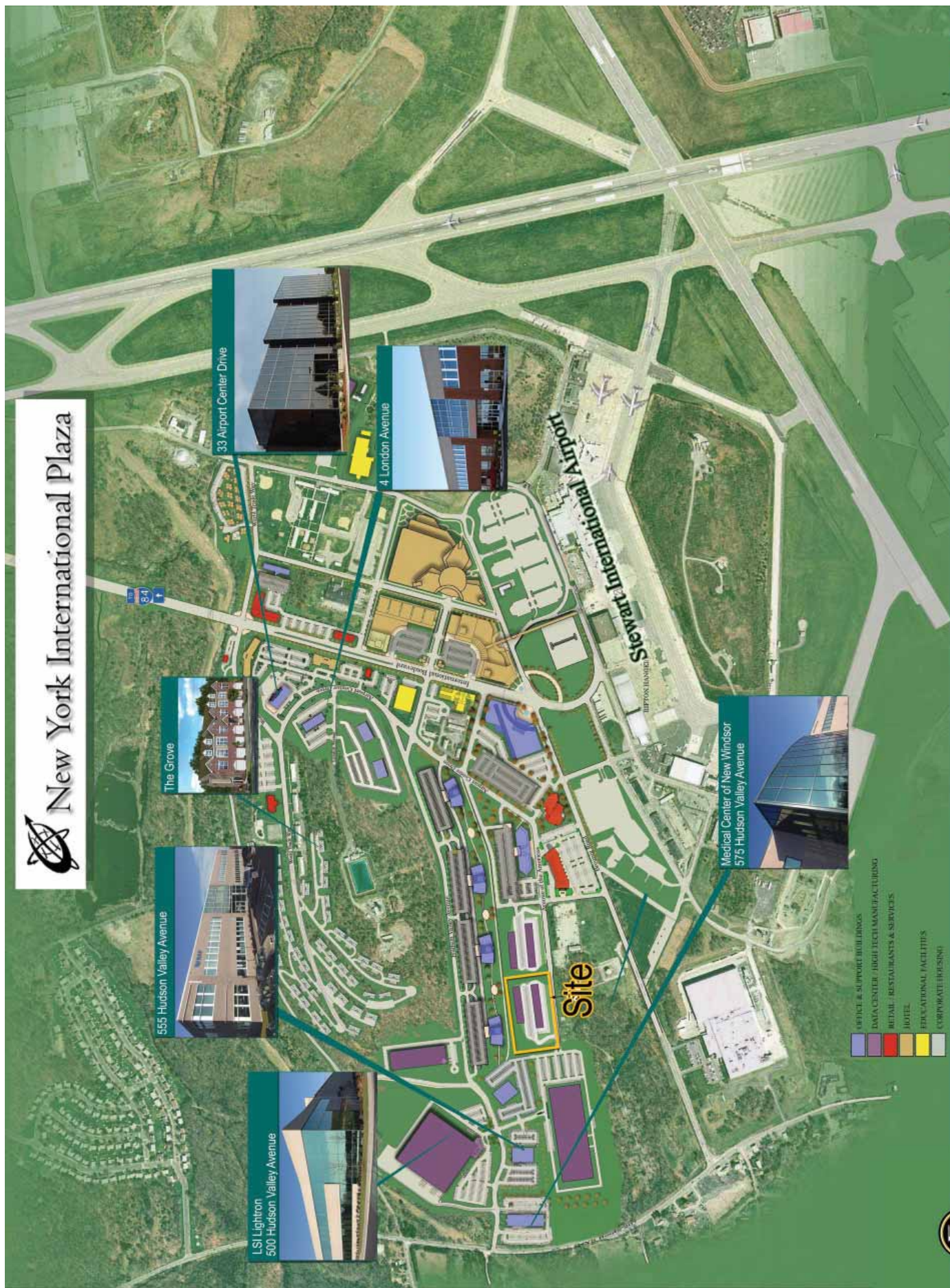
410 Avenue of the Americas  
1 STORY  
21,000 SQ.FT. BLDG.  
(Can be subdivided)

412 Avenue of the Americas  
1 STORY  
18,000 SQ.FT. BLDG.  
(Can be subdivided)





# New York International Plaza



LSI Lighttron  
500 Hudson Valley Avenue



555 Hudson Valley Avenue



The Grove



33 Airport Center Drive



4 London Avenue



Medical Center of New Windsor  
575 Hudson Valley Avenue

- OFFICE & SUPPORT BUILDINGS
- DATA CENTER / HIGH TECH MANUFACTURING
- RETAIL / RESTAURANTS & SERVICES
- HOTEL
- EDUCATIONAL FACILITIES
- CORPORATE HOUSING

Site

Stewart International Airport



FIRST COLUMBIA

22 Century Hill Dr., Ste 301

Latham, NY 12110

518.213.1000

www.NYIntPlaza.com

# MASTER PLAN